

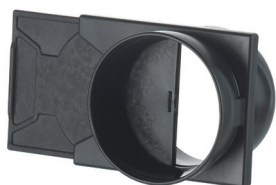
Arm-Evac Accessories

Accessories for Arm Evac's 105, 200, & 250

Metal Plenum

The Plenum is ideal for providing fume extraction to work spaces where soldering is being performed over a large area, such as at several locations on a large PCB. At 455mm (18") wide laminar airflow is supplied over the entire work area, protecting the operator from exposure to harmful fumes. The Plenum also preserves bench-top space as it provides a sturdy shelf. The Plenum is constructed from rugged 18 gauge steel, is static-safe and includes 3m (10') of 75mm (3") ESD Safe Flexible Hose for easy connection to the Arm-Evac 105, 200, 250 or 500.

Specifications	Static-Safe Metal Plenum
Part Number	8886-0366-P1
Dimensions	130mm (5") H x 460mm (18") W x 130mm (5") D
Weight	2.7 Kg (6 lbs)
Material	18 gauge steel
Inlet	One 75mm (3") inlet



75mm/3" Air Flow Controller

The Air Flow Controller for the 75mm (3") ESD Safe Flex-Arm gives the user complete control over the fume extraction air flow at their work bench. It is infinitely adjustable from fully-closed to fully-open to precisely deliver the ideal airflow needed to protect workers' health and eliminate any excessive air flow that could cool the solder/reflow work area.

Part Number: 8886-0795-P1



50mm/1.75" Air Flow Controller

The air flow controller can be connected to any part of the ESD Safe Flex-Arm (P/N 8882-0435-P1 or 8882-0415-P1). The controller is mounted in the base of the arm for ease access. The air flow controller features an adjustable sliding gate valve that is easy to use and adjust.

Part Number: 8886-0509-P1

Silencer Cart

Specifications	Silencer/Mobile Cart for Arm-Evac 200 & 250
Part Number	8885-1225-P1
Weight	4.5kg (10 lbs)
Description	Constructed of 18-Gauge steel and acoustical foam baffle liner. Arm-Evac 250 Silencer/Mobile Cart includes front locking casters.



Accessories

for Arm Evac's 105, 200, & 250

ESD Safe Flex-Arm

PACE's ESD Safe Flex-Arms features a highly flexible hard plastic that easily adjusts to an infinite number of positions. The ESD Flex-Arm can be customized with a number of accessories for specific needs. It can be mounted directly to the workbench using the quick mounting bracket (P/N 8886-0552-P1)*. **4 foot Flex-Arm now available (P/N 8886-0760-P1).**

Specifications	36/3" ESD Safe Flex-Arm	
Part Number	8886-0750-P1	
ESD Rating	Surface Resistivity: 1.00E3 Ohm; Volume Resistivity: <6.00E2 Ohm-cm	
Length / Diameter	915mm (36") / 75mm (3")	
Standard Endpiece	Round	



75mm (3") ESD Safe Flex-Arm Kit

Contains everything needed to mount an ESD Safe Flex-Arm to a workbench.

Part Number: 8886-0765-P1
Includes: (1)ESD Safe Flex-Arm (P/N 8886-0750-P1), (1)Bench Mounting Bracket Kit (P/N 8886-0745-P1).



75mm (3") Flex-Arm Bench Mounting Bracket Kit

Part Number: 8886-0745-P1
Includes: 2.5m (8') of 75mm (3") ESD Safe Flex Hose (P/N 8882-0755-P1) and Bench Mounting Bracket (P/N 8886-0770-P1).



75mm (3") Expansion Kit

Allows two 75mm (3") diameter arms to be connected to one 75mm (3") inlet on the fume extractor.

Part Number: 8882-0105-P1
Includes: (2) 2.5m (8'2") length of 75mm (3")ESD Safe Flex Hose, (1) 75mm (3") Y (PN 8882-0691), and (4) 75mm (3") End Cuff (P/N 8882-0776-P1).



ESD Safe Flex-Arm Extension Tube

75mm (3") Flex-Arm used to increase the length of 8886-0750-P1. 305mm (12") long.

Part Number: 8886-0790-P1



Optional Endpieces for 3"

- A** Round Endpiece for omni-directional fume collection.
Part Number: 8886-0792-P1
- B** Collection Tube Endpiece for focused and pin-point fume collection.
Part Number: 8886-0794-P1
- C** Cowl Endpiece for high volume laminar flow fume extraction.
Part Number: 8886-0793-P1

Accessories

for Arm Evac's 105, 200, & 250



50mm (2") Flex-Arm Bench Mounting Kit

Part Number: 8886-0553-P1
Includes: (1) 3m (10') Length of 75mm (3") ESD Safe Flex Hose, (1) 3" to 2" End Cuff (P/N 8882-0775-P1), (1) 3" End Cuffs (P/N 8882-0776-P1), and (1) Bench Mounting Bracket (P/N 8886-0552-P1).



Replaceable Fume-Scoop

Static Safe Fume Scoop for 50mm (2") ESD Safe Flex-Arm.
Part Number: 8882-0408-01-P1



50mm (2") Expansion Kit

Allows two 50mm (2") diameter arms to be connected to one 75mm (3") inlet on the fume extractor.

Part Number: 8882-0692-P1
Includes: (1) 3m (10') length of 75mm (3") ESD Safe Flex Hose, (1) 1.5m (5') length of 75mm (3") flex hose, (1) 75mm (3") Y (P/N 8882-0691-P1), (3) 3" End Cuffs (P/N 8882-0776-P1), and (1) 3" to 2" End Cuff (P/N 8882-0775-P1).



75mm (3") Y

Used to connect two hoses to a single hose. Allows for dual operator configurations.

Part Number: 8882-0691-P1



Bench Mounting Bracket (2") ESD Safe Flex-Arm

Allows the ESD Safe Flex-Arm 50mm (2") Flex-Arm to be mounted virtually anywhere.

Part Number: 8886-0552-P1



2" to 3" End Cuff

75mm (3") to 50mm (2") Reducer.

Part Number: 8882-0775-P1



Mounting Bracket for (3") ESD Safe Flex-Arm

Allows the ESD Safe Flex-Arm 75mm (3") to be mounted virtually anywhere.

Part Number: 8886-0770-P1



3" End Cuff

75mm (3") end cuff. Threads onto 75mm (3") flex hose for easy connection to 75mm (3") Flex-Arms and fume extractor inlets.

Part Number: 8882-0776-P1

*See pages 11-13 for installation tips and configurations